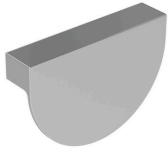
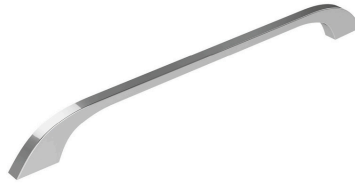


Timberline Handles



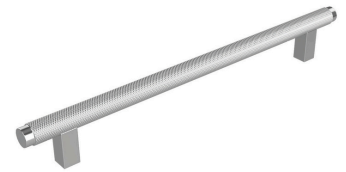
CRESCENT HANDLE

Attaches in the standard position towards top of door and drawer fronts. Available in 96mm.



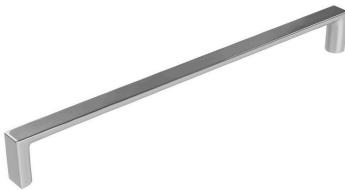
CURVE HANDLE

Available in 198mm & 359mm.



MONARCH HANDLE

Available in 150mm, 240mm, 340mm & 435mm.



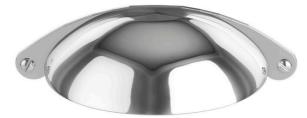
D HANDLE

Available in 104mm, 138mm, 230mm, 361mm & 457mm.



DUKE KNOB

Available in 35mm.



RETRO HANDLE

Available in 105mm.



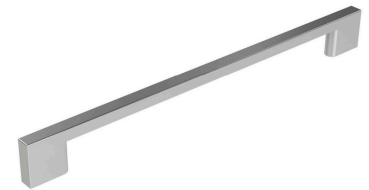
DUKE T BAR

Available in 80mm.



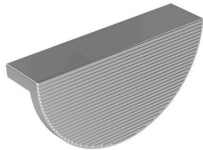
DUKE HANDLE

Available in 200mm & 400mm.



SQUARE HANDLE

Available in 224mm & 352mm.



ECLIPSE HANDLE

Attaches in the standard position towards top of door and drawer fronts. Available in 110mm.



FINGERPULL

Usable drawer height is reduced with fingerpull. Available in all colours.



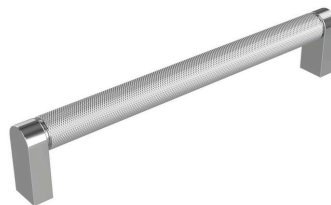
OVA HANDLE

Attaches on the top of door and drawer fronts. Available in 100mm, 200mm & 350mm.



FLAT KNOB

Available in 26mm



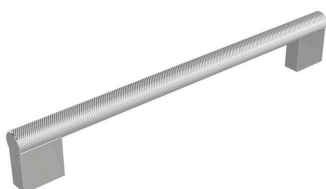
KNURLED BAR HANDLE

Available in 106mm, 202mm & 330mm.



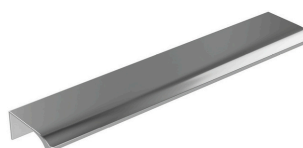
SOLID LIP HANDLE

Attaches in the standard position towards top of door and drawer fronts. Available in 50mm & 178mm.



LORD HANDLE

Available in 120mm, 215mm, 310mm & 410mm.



LOFT HANDLE

Attaches on the top of door and drawer fronts. Available in 200mm & 350mm.



WAVE HANDLE

Attaches on the top of door and drawer fronts. Available in 200mm & 350mm.