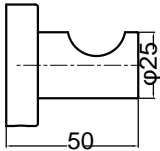


## Mecca Bathroom Accessories

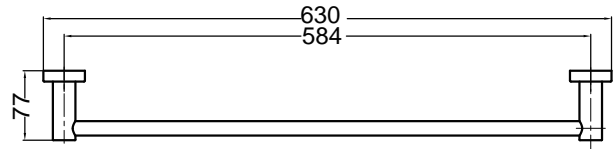
### ROBE HOOK

NR1982CH / NR1982MB / NR1982BN  
NR1982GM / NR1982BG / NR1982BZ  
NR1982MW



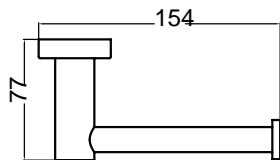
### SINGLE TOWEL RAIL 600MM

NR1924CH / NR1924MB / NR1924BN  
NR1924GM / NR1924BG / NR1924BZ  
NR1924MW



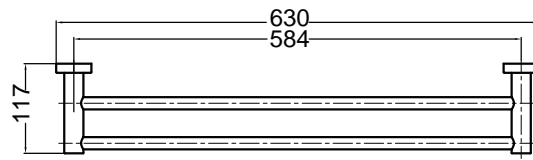
### TOILET ROLL HOLDER

NR1986CH / NR1986MB / NR1986BN  
NR1986GM / NR1986BG / NR1986BZ  
NR1986MW



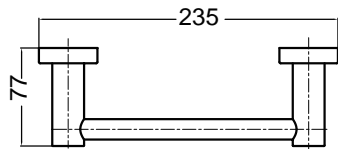
### DOUBLE TOWEL RAIL 600MM

NR1924dCH / NR1924dMB / NR1924dBN  
NR1924dGM / NR1924dBG / NR1924dBZ  
NR1924dMW



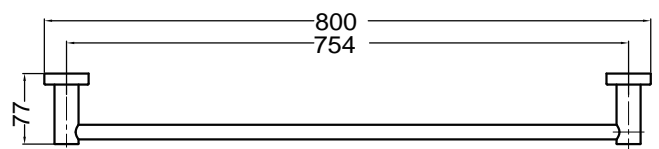
### HAND TOWEL RAIL

NR1980aCH / NR1980aMB / NR1980aBN  
NR1980aGM / NR1980aBG / NR1980aBZ  
NR1980aMW



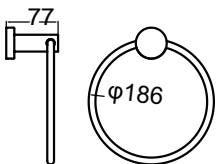
### SINGLE TOWEL RAIL 800MM

NR1930CH / NR1930MB / NR1930BN  
NR1930GM / NR1930BG / NR1930BZ  
NR1930MW



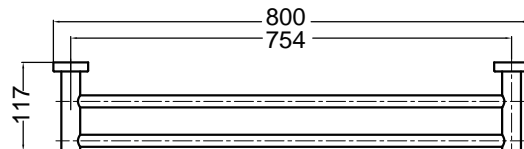
### HAND TOWEL RING

NR1980CH / NR1980MB / NR1980BN  
NR1980GM / NR1980BG / NR1980BZ  
NR1980MW



### DOUBLE TOWEL RAIL 800MM

NR1930dCH / NR1930dMB / NR1930dBN  
NR1930dGM / NR1930dBG / NR1930dBZ  
NR1930dMW



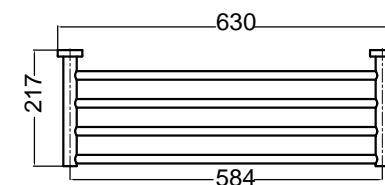
### METAL SHELF

NR1987aCH / NR1987aMB / NR1987aBN  
NR1987aGM / NR1987aBG / NR1987aBZ  
NR1987aMW



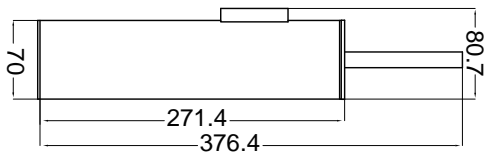
### TOWEL RACK

NR1989CH / NR1989MB / NR1989BN  
NR1989GM / NR1989BG / NR1989BZ  
NR1989MW



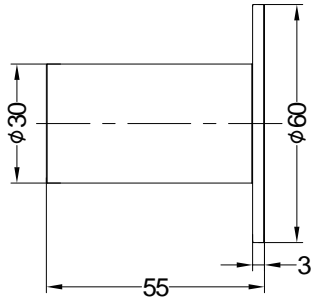
### TOILET BRUSH HOLDER

NR1988CH / NR1988MB / NR1988BN / NR1988GM  
NR1988BG / NR1988BZ / NR1988MW



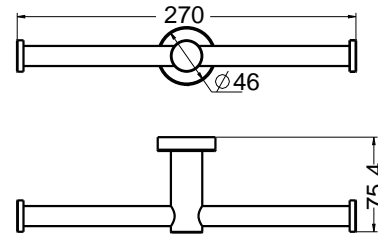
### MECCA ROBE HOOK II

NR1982aCH / NR1982aMB / NR1982aBN / NR1982aGM  
NR1982aBG / NR1982aBZ / NR1982aMW



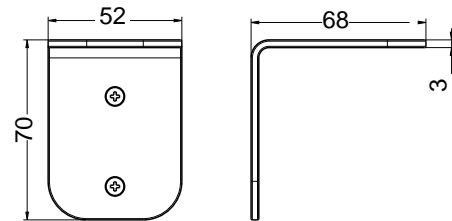
### DOUBLE TOILET ROLL HOLDER

NR1986dCH / NR1986dMB / NR1986dBN  
NR1986dGM / NR1986dBG / NR1986dBZ  
NR1986dMW



### MEECA SOAP BOTTLE HOLDER

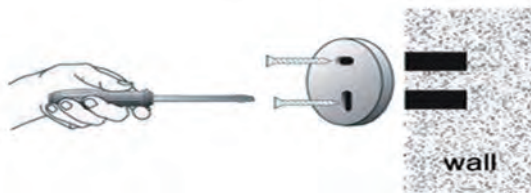
NR1985CH / NR1985MB / NR1985BN  
NR1985GM / NR1985BG / NR1985BZ  
NR1985MW



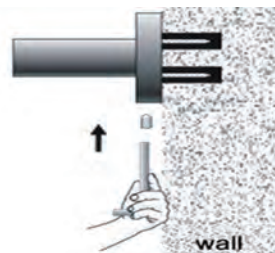
## Installation Instruction



1. Put the fixing blocks (piece) over on the right place on the wall, and stay level, use marking pen through the holes of fixing block to mark out fixing spots on the wall. Then drill holes by electric hand drill with 6mm drilling bit on the spots.



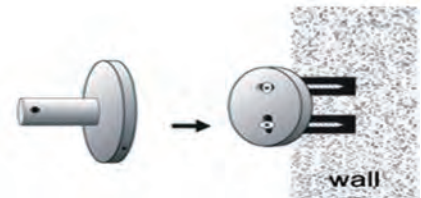
3. Put fixing block cover on the holes and fix firmly by expansion screws.



5. Screw grub screws into the base, make it against the fixing block tight and firm.



2. Put the expansion plugs into the wall by hammer.

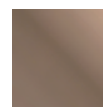


4. Put the base of bathroom accessory cover on the fixing blocks.

## Available Colour



CHROME



BRUSHED BRONZE



MATTE BLACK



BRUSHED NICKEL



GUN METAL



BRUSHED GOLD



MATTE WHITE